

Live Steam Shay in 1:20.3 - in Switzerland

photos and text by Otto Hadorn

For a long time I had the desire to own a Shay locomotive for my Little River Lumber & Mining Co. Railroad, to be used for hauling logs and ore in my backyard. In my head, Shays and hauling logs in the forests belong together.

The problem was that the purchase of a manufactured model from Catatonk or Geoff Coldrick was too costly for my low hobby budget. So the possibility of scratchbuilding a freelance Shay took over.

My son Beat, a model railroader on 5' tracks, offered to build the frame, the geared trucks and the telescopic action driveshafts. My job was only to build the gas-fired single flue T-boiler, the twin-cylinder steam engine, gas-tank and all the little things that make the loco quaint and charming.

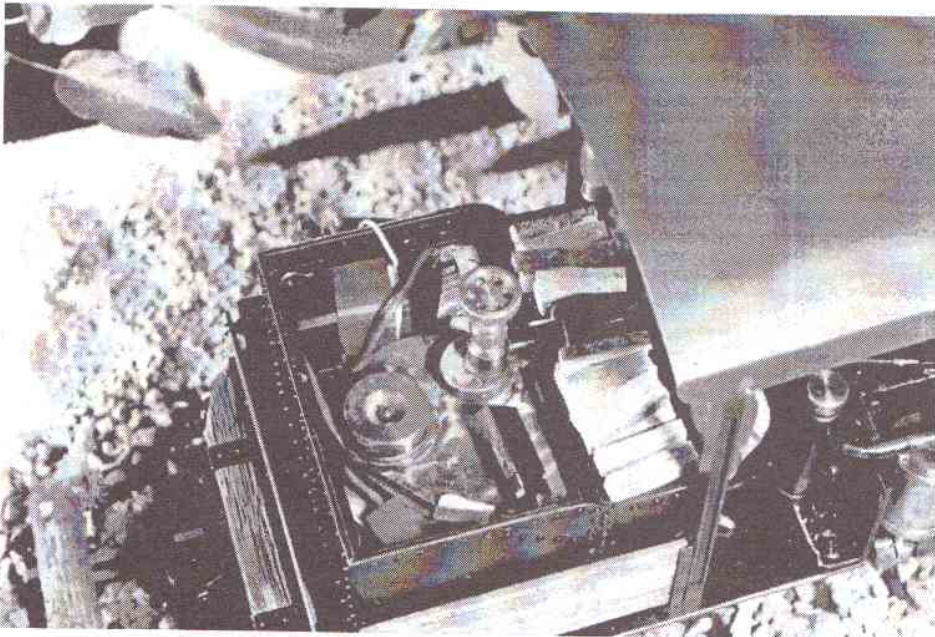
The result you can see in the pictures: A great looking, powerful Shay!

Description:

- Scale: 1: 20.3
- 2 oscillating cylinders, double action, Bore 12 mm, Stroke 16 mm
- Gear ratio 2:1
- Gas-fired, singleflue T-boiler, dia. 50 mm
- Pressure: 3 bar (42 psi)
- Weight in working order: 4 kg
- R/C by Futaba

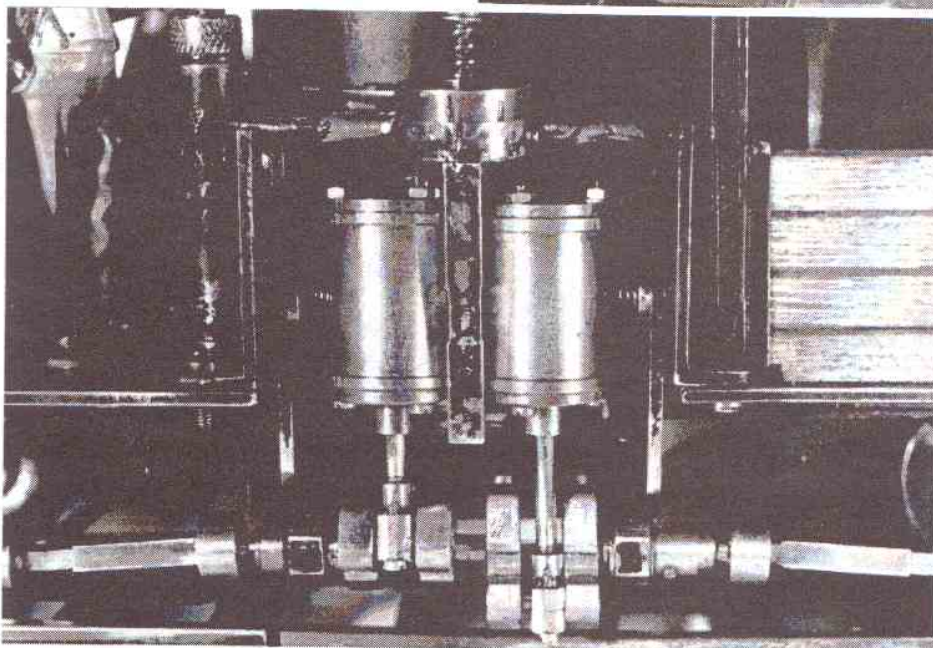
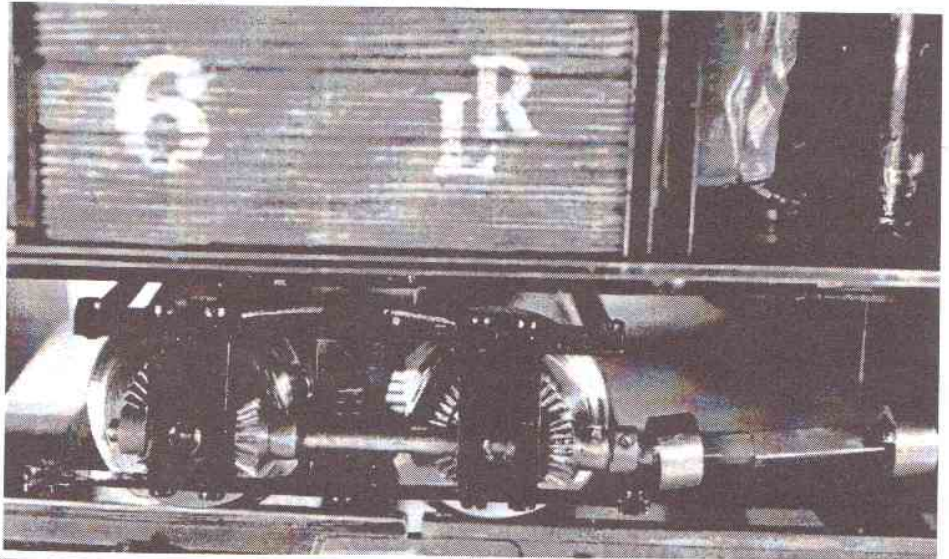


Above: The Author's Shay, hard at work on his Little River Lumber and Mining Co. line in Switzerland.

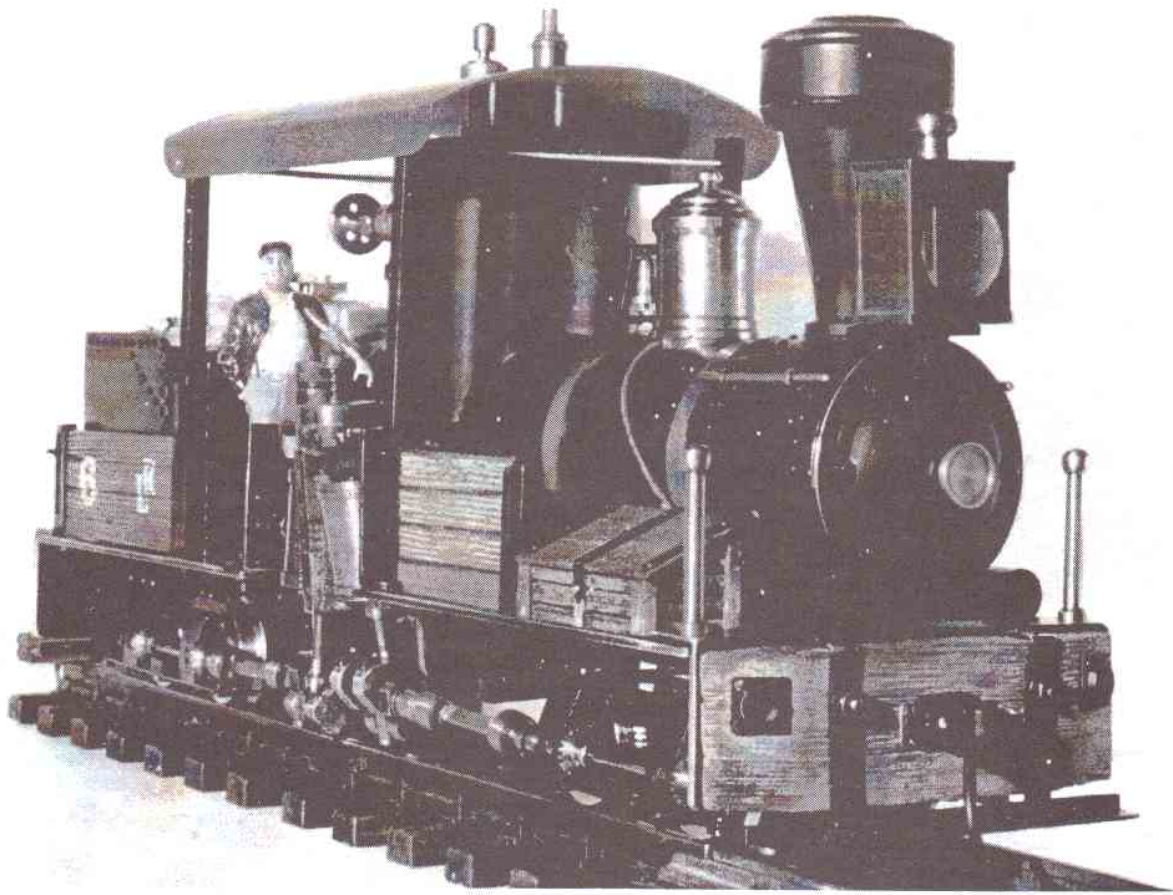


Left: The fuel tank and R/C gear fit neatly in the bunker.

Right: As SitG contributor Carl Malone would say, "Gears are good!" Detail shot of the rear truck and driveline reveal neat craftsmanship by the Author's son.



Left: The Author's scratchbuilt twin-cylinder steam motor provides plenty of power and adds visual interest.



Classic 3/4 front view of the Author's fine scratchbuilt narrow gauge Shay